



# Assistive Technology

Tiffany C. Foster

# TABLE OF CONTENTS

---

## What is Assistive Technology?

Designers need to know

01



## Screen Readers

Top brands used

02



## Screen Magnifiers

Keeping visual design accessible

03



04

## Speech Input Software

Think about speech to text in design

05

## Other Applications

There are many types of assistive technology applications

06

## Conclusion

How to incorporate assistive software in design

# What does assistive technology do?

---



## **Unlocks The Web**

creates alternative solutions to accessing web content for those with disabilities



## **Creates Opportunity**

makes everyday tasks and work functional



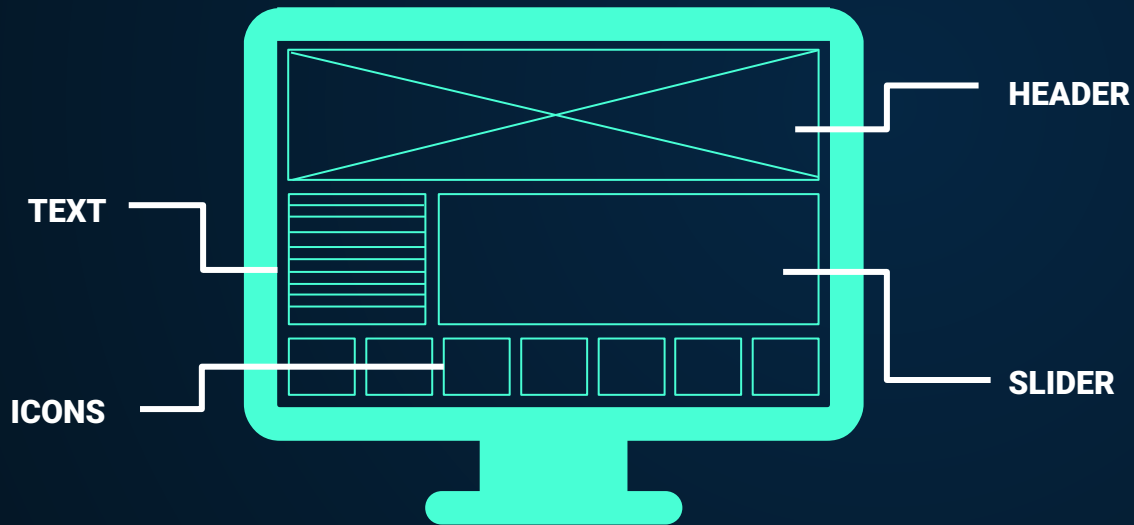
## **Builds Inclusion**

bridges the gap of inclusion for those who use it and design for it

# Screen Readers

---

Assists people with visual impairment by translating the content on a computer screen



## Brands

- Jaws for Microsoft
- Orca by GNOME (free)
- NVDA/Non-visual desktop access for Windows (free)

Keep in mind  
Hierarchy, naming, alt tags,  
and proper accessibility  
formatting (similar in use is  
text readers for learning  
disability)

# Screen Magnifiers

---



Magnify text on a page

Brands Include:

- MAGIC Screen Magnifier
- Zoom Text Magnifier
- Iconico

Keep in Mind

Keep text at a minimum of 14pt

# Speech Input Software

---

Translate speech to text

Brands

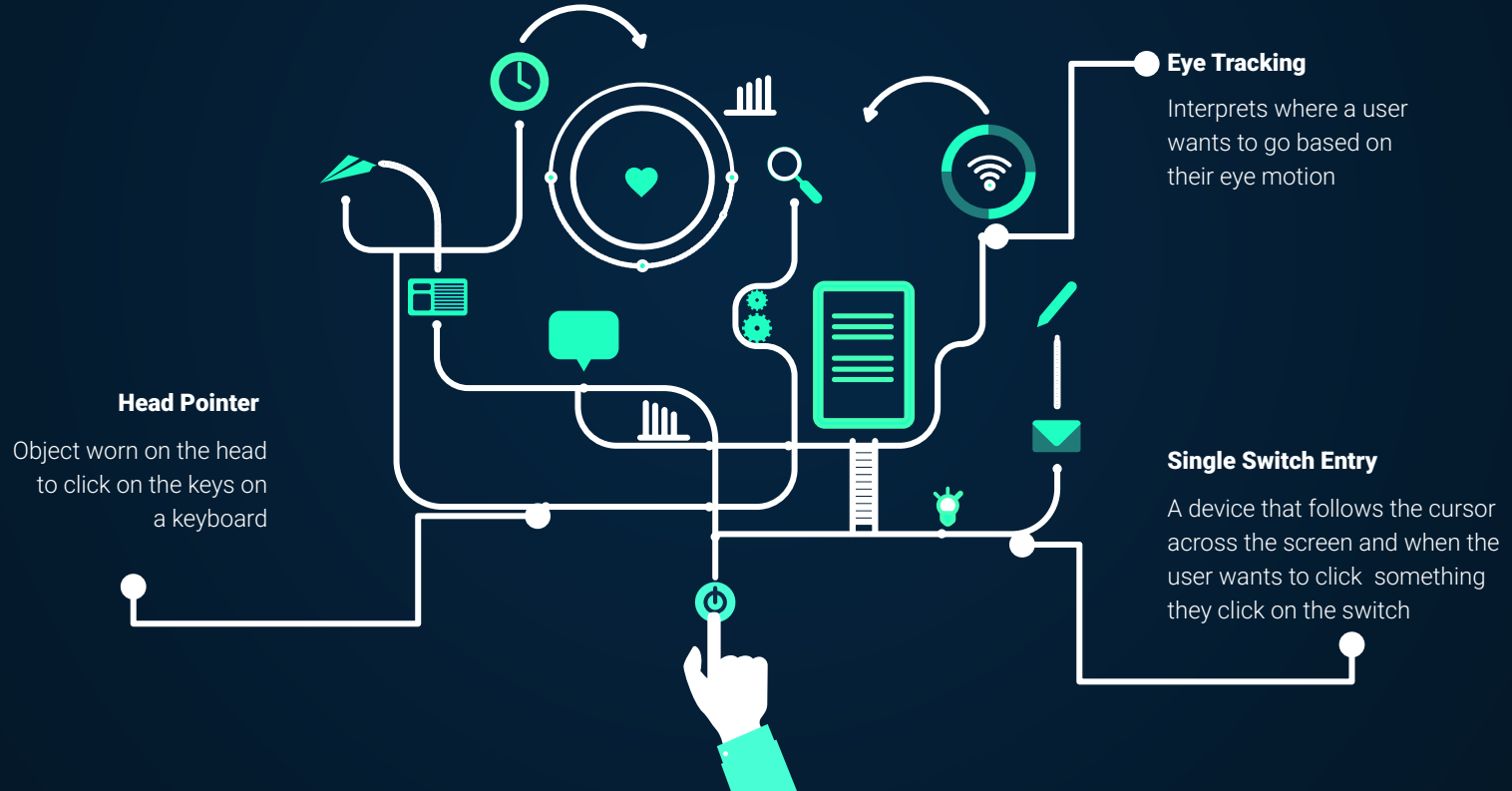
- Dragon Naturally Speaking
- Windows Speech Recognition

Keep in Mind

Naming of links, headers, and graphics



# Other Applications





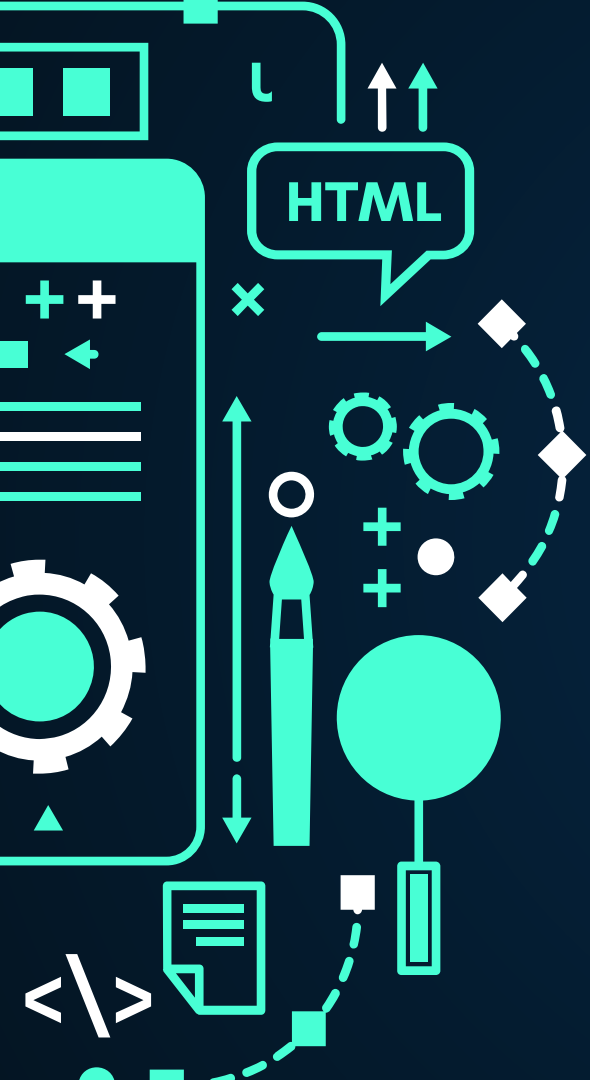
# Design for Assistive Technology

## Conclusion

---

When you know how assistive technology is helping people, you can better design around the software applications.

Assistive technology only works on sites designed to allow the applications access!



# THANKS!

Any question?

[tiffanycfoster.com](http://tiffanycfoster.com)

828-423-9541

[fosterctiffany@gmail.com](mailto:fosterctiffany@gmail.com)

